



# MONTHLY MEMBERSHIP PROGRESS REPORT

District 29 C

Results as of: 01/31/2019

GMT: CINDY GREGG

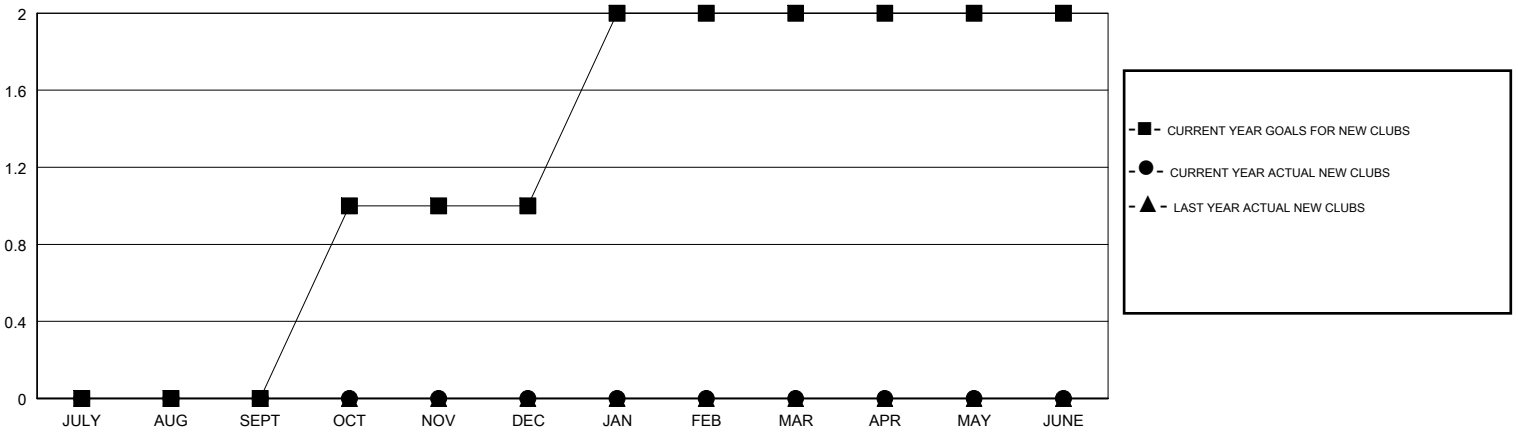
LOCATION WEST VIRGINIA

GMT CA

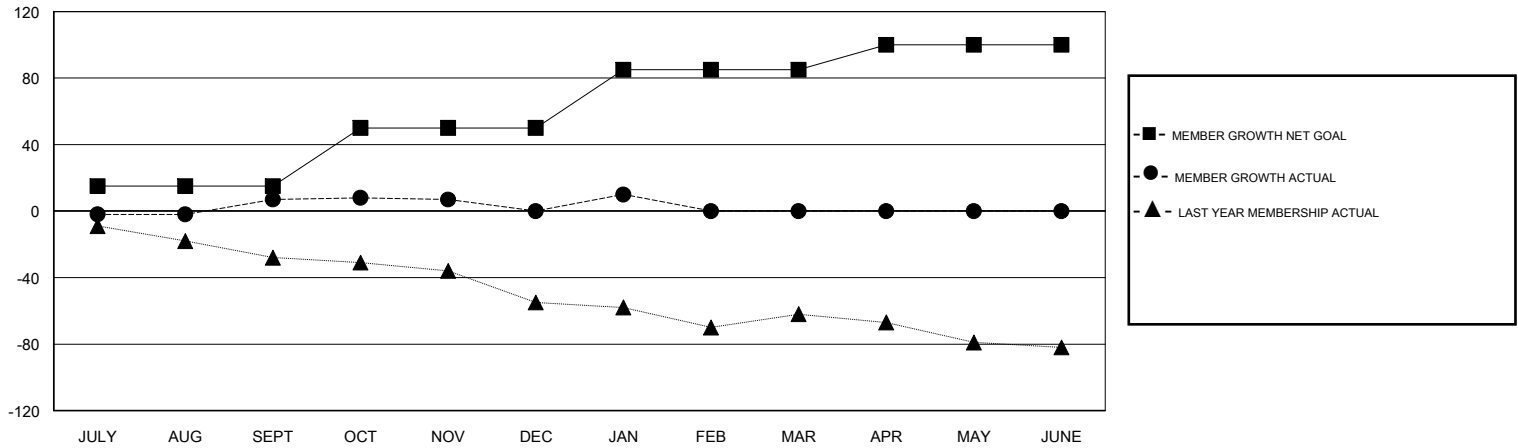
Clubs			
RESULTS FOR 2018-2019			
QUARTER	NEW CLUB GOAL	NEW CLUBS	DROPPED CLUBS
JULY/AUG/SEPT	0	0	0
OCT/NOV/DEC	1	0	0
JAN/FEB/MAR	1	0	0
APR/MAY/JUNE	0	0	0

Members			
RESULTS FOR 2018-2019			
QUARTER	MEMBER GROWTH NET GOAL	MEMBER GROWTH ACTUAL	DROPPED MEMBERS ACTUAL (including transfers)
JULY/AUG/SEPT	15	26	15
OCT/NOV/DEC	35	17	22
JAN/FEB/MAR	35	27	17
APR/MAY/JUNE	15	0	0

GOALS AND ACTUAL NEW CLUBS CUMULATIVE



GOALS AND ACTUAL MEMBERS CUMULATIVE



DROPPED CLUBS: 0	23 CLUBS OF 57 ADDED 1 OR MORE NEW MEMBERS	<u>GENDER DISTRIBUTION</u>	
DROPPED MEMBERS		MALE	794 (67.35%)
DECEASED	14	FEMALE	385 (32.65%)
CLUB CANCELLED	0	Women Percentage Fiscal Year Goal: 30%	
OTHER	40	TOTAL FAMILY UNIT MEMBERS	288
TOTAL	54	FAMILY MEMBERS PAYING HALF DUES	146

[CLICK HERE FOR CUMULATIVE MEMBERSHIP DATA](#)